

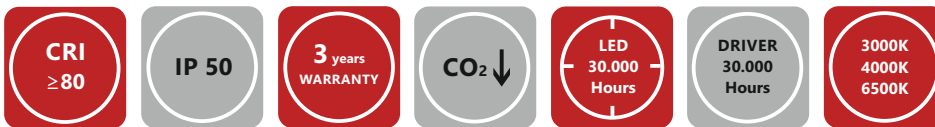
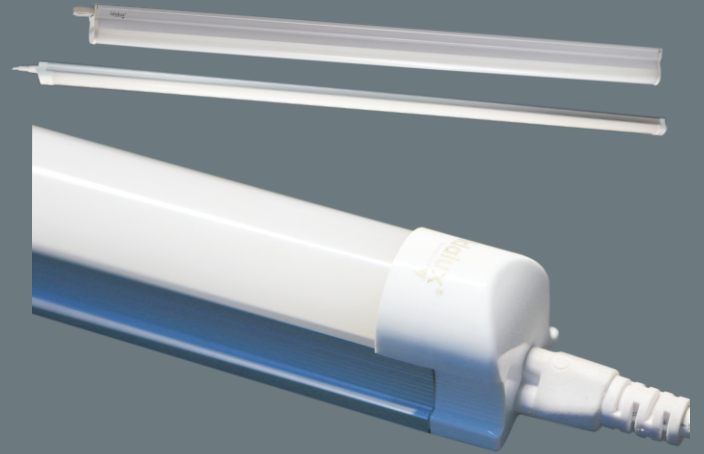
ECOS Premium LLE (Pendant) LED Linear Light Engine

DESCRIPTION:

Ultra thin design.
High efficient constant current driver.
Leading heat sink design.
No UV or infrared radiation, no danger of broken glass.
Low energy consumption, saves appr. 60% power comparing conventional light.
Be equipped with short circuit, overload protection.
3 years warranty time.
Certificates: CE, ROHS

Indoor Recessed Application IP50

High Efficiency Lighting and Automation Solutions



Article	Description	Lumen Output	System Power	Beam Angle	Body Color	Product Size	Package Qty.
401915016013***	ECOS 8 PVC SELECT L:600 mm 9W	≥1000 Lm	9W	110°	Gray	L600*W30*H34mm	10
401915016014***	ECOS 8 PVC SELECT L:1200 mm 20W	≥2200 Lm	20W	110°	Gray	L1200*W30*H34mm	10
401915015013***	ECOS 8 ALM SELECT L:600 mm 9W	≥1000 Lm	9W	110°	Gray	L600*W30*H34mm	10
401915015014***	ECOS 8 ALM SELECT L:1200 mm 20W	≥2200 Lm	20W	110°	Gray	L1200*W30*H34mm	10
401915013013***	ECOS 5 PVC SELECT L:600 mm 9W	≥1000 Lm	9W	110°	Gray	L600*W22*H32mm	10
401915013014***	ECOS 5 PVC SELECT L:1200 mm 20W	≥2200 Lm	20W	110°	Gray	L1200*W22*H32mm	10
401915014013***	ECOS 5 ALM SELECT L:600 mm 9W	≥1000 Lm	9W	110°	Gray	L600*W22*H32mm	10
401915014014***	ECOS 5 ALM SELECT L:1200 mm 20W	≥2200 Lm	20W	110°	Gray	L1200*W22*H32mm	10

Technical

Embedded Constant Current Driver
Input Voltage: AC 180-265V/AC 50/60Hz
Power Factor: >0.95
LED Type: SMD Chip with LM80 certificate
CRI: ≥80
ta (temperature ambient): -15°C ... +45°C
Material: Aluminum

Options

Compatible Emergency Conversion Kit
Accessories: pendant equipment, mountain plate
Customised dimension

LED Color Selection table

for WW 3000K, Pls. specify 030 at order.
for NW 4000K, Pls. specify 040 at order.
for CW 6500K, Pls. specify 065 at order.

Certificate



TECHNICAL NOTES:

Please contact us for different body colors or any special requests.
Please specify the colour temperatures of lighting, dotted the area in order.
Output of LED lighting flux current may vary ± 5%
Power consumption is approximately. Drivers and LED packets may vary according to the manufacturers value.