

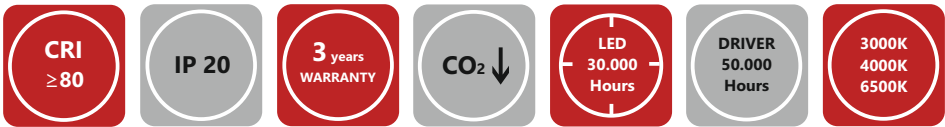
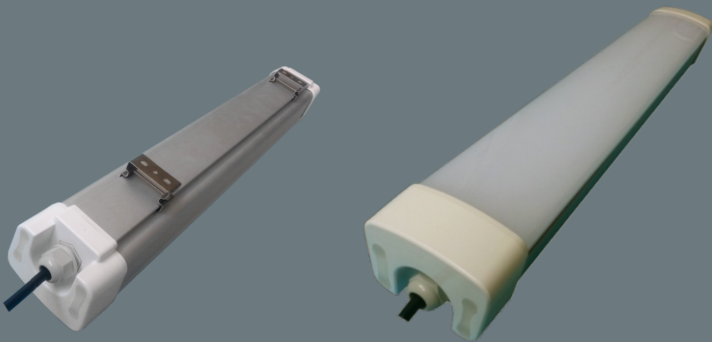
Hi-PARC Premium LLE
Linear Light Engine

DESCRIPTION:

Ultra thin design.
High efficient LED and constant current driver.
Leading heat sink design.
No UV or infrared radiation, no danger of broken glass.
Low energy consumption, saves appr. 60% power
comparing conventional lights.
Be equipped with short circuit, overload protection.
3 years warranty time.
Certificates: CE, ROHs.

Outdoor Application IP65

High Efficiency Lighting and Automation Solutions



Article	Description	Lumen Output	System Power	Beam Angle	Body Color	Product Size	Package Qty.
404519001001***	WPL-01-0 Hi-PARC PREMIUM L:600mm	≥ 1640 Lm	15W	120°	Gray	600x90x74mm	20
404519001002***	WPL-01-0 Hi-PARC PREMIUM L:900mm	≥ 2720 Lm	23W	120°	Gray	900x90x74mm	20
404519001003***	WPL-01-0 Hi-PARC PREMIUM L:1200mm	≥ 3280 Lm	29W	120°	Gray	1200x90x74mm	20
404519001004***	WPL-01-0 Hi-PARC PREMIUM L:1500mm	≥ 4950 Lm	43W	120°	Gray	1500x90x74mm	20

Technical

High Efficient LED and Constant Current Driver
Input Voltage: AC 180-265V/AC 50/60Hz
Power Factor: >0.95
LED Type: SMD Chip with LM80 certificate
CRI: Ra≥80
Work temperature: -15°C+45°C
Material: Aluminum+PMMA

Options

DALI, Touch-DIM, 1-10V, DSI control
Corridor Function application
Compatible Emergency Conversion Kit
CRI: Ra>90

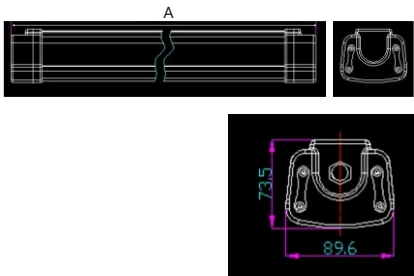
LED Color Selection table

for 3000K, Pls. specify 030 at order.
for 4000K, Pls. specify 040 at order.
for 6500K, Pls. specify 065 at order.

Certificate



Dimension



TECHNICAL NOTES:

Please contact us for different body colors or any special requests.
Please specify the colour temperatures of lighting, dotted the area in order.
Output of LED lighting flux current may vary ± 5%
Power consumption is approximately. Drivers and LED packets may vary according to the manufacturers value.

