

CARINA Premium SLE

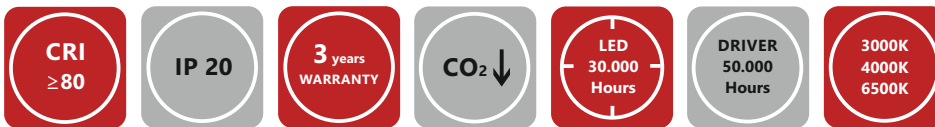
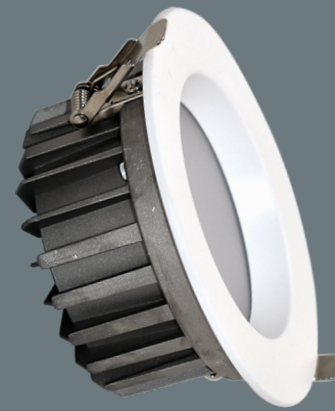
DownLight Engine

DESCRIPTION:

Perfectly suitable to replace traditional lights
 Perfect heat reduction technology
 Wide voltage range
 The narrow colour tolerance
 Quick wiring
 Strong spring mechanism
 3 years warranty time.
 Certificates: CE, ROHS

Indoor Recessed Application

High Efficiency Lighting and Automation Solutions



| Article | Description | Lumen Output | System Power | Beam Angle | Body Color | Product Size | Package Qty. |
|-----------------|-----------------------------|--------------|--------------|------------|------------|--------------|--------------|
| 404000004007*** | DLC-003-0 CARINA PREMIUM 3" | 415 Lm | 3.95W | 90° | White | ø98x65mm | 20 |
| 404000004008*** | DLC-003-0 CARINA PREMIUM 4" | 750 Lm | 6.9W | 90° | White | ø123x65mm | 20 |
| 404000004009*** | DLC-003-0 CARINA PREMIUM 5" | 1000 Lm | 9W | 90° | White | ø150x65mm | 20 |
| 404000004003*** | DLC-003-0 CARINA PREMIUM 6" | 1730 Lm | 16W | 90° | White | ø175x75mm | 10 |
| 404000004002*** | DLC-003-0 CARINA PREMIUM 8" | 2160 Lm | 19W | 90° | White | ø225x77mm | 10 |

Technical

High Efficient Constant Current Driver
 Input Voltage: AC180-250V AC 50/60Hz
 Power Factor: >0.95
 LED Type: Mid-power chip with LM80
 CRI: Ra≥80
 Work temperature: -15°C+45°C
 Material: Aluminum

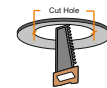
Options

DALI, Touch-DIM, 1-10V, DSI control
 Corridor Function application
 Compatible Emergency Conversion Kit
 CRI: Ra>90

LED Color Selection table

for WW 3000K, Pls. specify 030 at order.
 for NW 4000K, Pls. specify 040 at order.
 for CW 6500K, Pls. specify 065 at order.

Certificate



2.5": ø 75mm
 3.5": ø 100mm
 4": ø 125mm
 5": ø 150mm
 6": ø 200mm

Dimension

TECHNICAL NOTES:

Please contact us for different body colors or any special requests.
 Please specify the colour temperatures of lighting, dotted the area in order.
 Output lighting flux of LED lamp and power consumption of drivers may vary ± 5% because of the manufacturers values.